



ETERNAL



NUTRITION - HEALTH - QUALITY OF LIFE
YOUR NUTRITIONAL HEALTH PARTNER

— SHANGHAI ETERNAL BIOLOGICAL TECHNOLOGY LIMITED COMPANY —

FOUNDER AND OWNER OF ETERNAL INTERNATIONAL MR. ZHAO HUI GONG

Mr. Zhao Hui Gong is the first pioneer to successfully integrate natural healing and nutrition, achieving remarkable success in both fields. He is also the first individual from China to establish a large, modern international hospital in Africa, staffed with professionals from various countries.

As an entrepreneur, he pioneered the practice of distributing 100% of his company's financial profits to shareholders and partners. He has been at the forefront of providing healthcare services in Africa for an extended period, offering free health screenings and wellness counseling to thousands.

A firm believer in the philosophy that health is wealth, he consistently emphasizes that good health is the foundation of a happy, fulfilling life. His dedication to this principle has helped many individuals achieve their dreams. His journey of hard work, commitment, and impact serves as a source of inspiration for countless entrepreneurs.



EXPERT IN LEADERSHIP, STRATEGIC PLANNING, AND MOTIVATIONAL SPEAKING

Mr. Zhao Hui Gong is the founder and owner of Eternal International. He started the company with a small team, driven by a strong vision and the belief that success is built on perseverance. He holds degrees in Natural Health Sciences, Marketing, and Leadership. Under his guidance, Eternal International has grown from a single-member enterprise to an organization with over one million members. The company has maintained an impressive average annual growth rate of 20%, earning widespread recognition both locally and internationally.

Today, Mr. Gong has inspired millions through his success and unwavering integrity. Eternal International continues to expand globally, opening branches and service centers in multiple countries, particularly across Africa. Member countries include Congo, Cameroon, Nigeria, Tanzania, Zambia, and several others. Through his visionary leadership, Mr. Gong has empowered countless Africans to turn their aspirations into reality. The company has awarded hundreds of top-performing members with luxury cars, dream vacations, and premium real estate, reinforcing its commitment to rewarding excellence. True to its mission, Eternal International has consistently delivered on its promises, returning approximately 55% of its total revenue to members as commission payments.

In 2017 alone, the company recorded over \$70 million in sales, marking a historic milestone. Eternal International remains dedicated to providing equal opportunities for individuals to pursue their dreams and improve their quality of life. Through its innovative business model, people worldwide have enhanced their health and financial stability. The company has pioneered sustainable income opportunities, enabling members to start and grow their own businesses.

Mr. Gong is a visionary leader, a dedicated mentor, and an advocate for natural wellness, financial independence, peace, and prosperity. Through his guidance, thousands of individuals have gained knowledge, transformed their lives, and achieved success. His unwavering commitment to empowering others has left a lasting impact in multiple African nations. He continues to open doors of opportunity, inspire hope, and encourage those facing challenges. His legacy as a trailblazer and role model will endure for generations to come.



ETERNAL INTERNATIONAL



HEALTH WEALTH PEACE AND LOVE







ETERNAL

**NUTRITION, HEALTH &
AND QUALITY OF LIFE
YOUR NUTRITIONAL
HEALTH PARTNER**



CONTENTS >>>

01

Food Supplements Products

Reishi Coffee Solid Drink.....	2
Vitality Coffee.....	3-4
Cordyceps Coffee Solid Drink.....	5
Antilipemic Tea.....	6
Gyrophora Tea.....	7
Ginko Herbal Tea.....	8
Isomalto-Oligosaccharide Powder.....	9
Calcium and Protein Powder.....	10
Saw Palmetto Polypeptide Capsule.....	11-12
NMN 20000.....	13
Dandelion Sanjie Hard Capsule.....	14
Natto Kinase Capsule.....	15
Saffron Aminobutyric Acid Hard Capsule.....	16
Propolis Soft Capsule.....	17-18
Multivitamin Tablets for Middle-aged Adults.....	19
Aloe Soft Capsule.....	20
Soybean Soft Capsule.....	21-22
Spirulina Tablets.....	23-24
Lecithin Soft Capsule.....	25-26
Folic Acid Soft Capsule.....	27-28
Fish Oil Soft Capsule.....	29-30
Natural Vitamin E Soft Capsule.....	31
Broken Ganoderma Lucidum Spore Powder Soft Capsule.....	32
Multi-effect Toothpaste.....	33-34
Aloe Vera Whitening Soap.....	35-36
Roselle and Cranberry Solid Drink.....	37-38
Individual Products Benefits.....	39-42

02

About Company

Company Motto and Mission.....	43-48
--------------------------------	-------

03

Eternal Business Guide

Six Salaries Resources.....	49-50
The Rank of Sections.....	51-55
Success Quotes.....	56
Health, Wealth, Peace & Love.....	57-60

04

Our Social Media

Scan Here With Your Mobile Phone.....	61
Eternal Free Note Book.....	62



COGNITIVE FUNCTIONS

HEALTH WEALTH PEACE AND LOVE



>> Nutrition Knowledge

Reishi Coffee is a unique blend of premium coffee and Reishi (*Ganoderma lucidum*) extract, combining the invigorating effects of coffee with the numerous health benefits of Reishi. Coffee contains caffeine, which stimulates the central nervous system, enhancing alertness and mental focus.

It also includes chlorogenic acid, known for its antioxidant properties. Reishi, on the other hand, is rich in polysaccharides, triterpenoids, and ganoderic acids, which contribute to immune regulation, antioxidant activity, and anti-inflammatory effects.

Some variations of Reishi Coffee may include mild sweeteners or natural flavors to enhance taste and balance the bitterness of the ingredients.



>> Product Features

- **Boosts Energy & Mental Focus** – The caffeine in coffee helps eliminate drowsiness, improve concentration, and enhance work efficiency.
- **Supports Immune Health** – Reishi extract contains polysaccharides and triterpenoids, which help regulate and strengthen the immune system, improving the body's natural defense against illnesses.
- **Reduces Fatigue & Stress** – The combination of Reishi and caffeine helps combat physical and mental fatigue, promoting relaxation and overall well-being.
- **Powerful Antioxidant Properties** – Reishi and coffee work together to neutralize free radicals, delaying cellular aging and supporting long-term health.
- **Aids in Stress Relief** – The adaptogenic properties of Reishi help the body better cope with stress and maintain balance.



>> Suitable For

- **Busy Professionals & Office Workers** – Ideal for those who often stay up late, work under high-pressure conditions, and need an energy boost to stay productive.
- **Individuals with Weak Immunity** – Beneficial for those who frequently fall ill or want to strengthen their immune system naturally.
- **Health-Conscious Individuals** – Suitable for those who seek a healthy lifestyle, looking for additional wellness benefits while enjoying their daily cup of coffee.

>> Precautions

- Reishi Coffee contains caffeine, so individuals who suffer from insomnia or caffeine sensitivity should consume it with caution to avoid sleep disturbances.
- Pregnant and breastfeeding women should consult a doctor before consuming Reishi Coffee, as the effects of caffeine and Reishi on the fetus or infant are not fully established.

>> Nutrition Knowledge

Maca Coffee is a specially formulated blend designed primarily for men, combining the rich aroma and stimulating effects of coffee with the powerful benefits of maca root extract. Coffee contains caffeine and chlorogenic acid—caffeine helps boost mental alertness and energy levels, while chlorogenic acid offers antioxidant protection.

Maca is widely recognized for its ability to enhance male vitality, stamina, and overall well-being. It is rich in macene, macamide, glucosinolides, essential vitamins, and minerals, all of which play a crucial role in supporting endurance, hormonal balance, and physical strength.



>> Benefits for Men

Maca Coffee is an ideal health-boosting beverage for men, offering a combination of instant energy from coffee and long-term stamina support from maca.

The key benefits include:

- **Boosts Stamina & Physical Strength** – Enhances endurance and reduces fatigue, making it ideal for men with physically and mentally demanding lifestyles.
- **Increases Energy & Focus** – Caffeine quickly stimulates the mind, improving concentration and work performance, while maca provides sustained energy without crashes.
- **Supports Male Vitality & Performance** – Maca is traditionally known to enhance libido and reproductive health, helping to maintain sexual wellness and overall virility.
- **Regulates Hormonal Balance** – Helps stabilize testosterone levels, promoting muscle growth, improved mood, and better overall well-being.
- **Strengthens the Immune System** – Packed with essential vitamins, minerals, and antioxidants, Maca Coffee supports immune function and reduces oxidative stress.

>> Suitable For

Maca Coffee is specifically recommended for:

- Men with high-intensity jobs who frequently work long hours, stay up late, or experience burnout.
- Men experiencing fatigue, reduced stamina, or lack of energy due to work stress or an irregular lifestyle.
- Men looking to naturally enhance their vitality, endurance, and reproductive health.
- Men who want to enjoy coffee while gaining added health benefits.

>> Not Suitable For

- Men who are highly sensitive to caffeine or suffer from insomnia, as it may worsen sleep disturbances.
- Pregnant women, breastfeeding mothers, and minors, as maca may affect hormonal development.



ETERNAL

VITALITY COFFEE

Maca Extract, Oyster Extract, Sealwort Extract,
Ginseng Extract, Caffe Powder

For Men

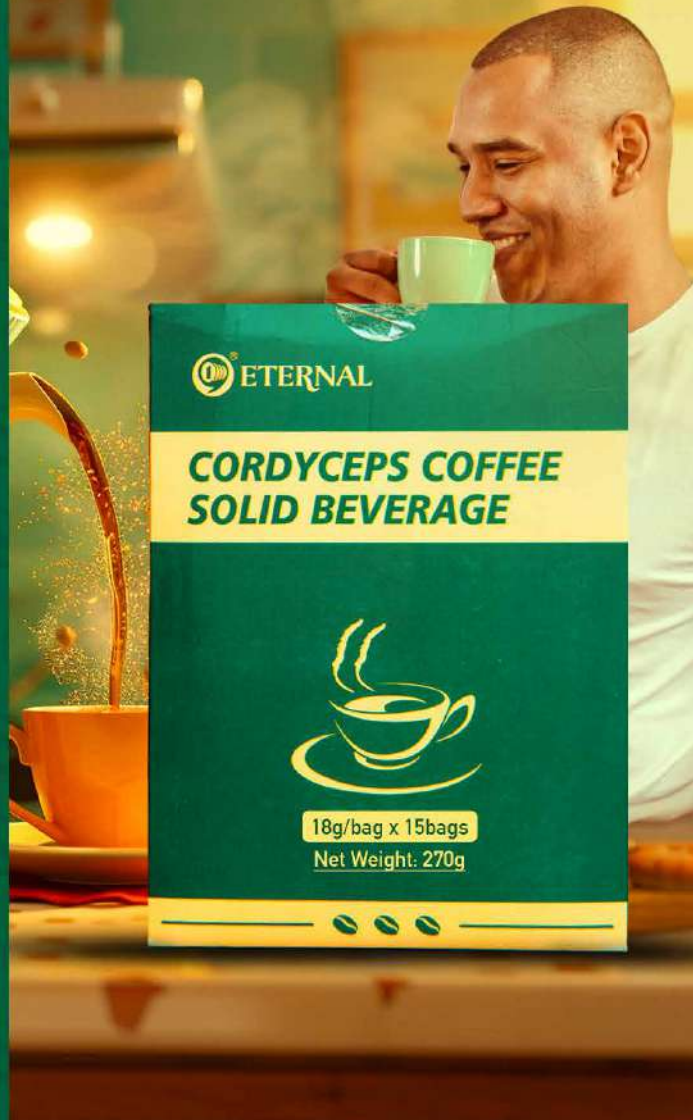
20g/bag × 10bags
Net Weight: 200g



>> Product Knowledge

Cordyceps Coffee is a unique blend of premium coffee and Cordyceps extract, designed to provide both mental alertness and health benefits. The caffeine in coffee stimulates the central nervous system, promoting wakefulness and enhancing focus, while also delivering antioxidants such as chlorogenic acid.

Cordyceps, a prized ingredient in traditional medicine, is rich in cordycepin, cordycepic acid, cordyceps polysaccharides, essential amino acids, and trace elements. These compounds contribute to immune support, energy enhancement, and overall well-being. To improve taste and texture, some variations of Cordyceps Coffee may contain small amounts of sugar, creamer, or other natural flavor enhancers.



>> Product Benefits

- **Boosts Energy & Alertness** – The caffeine content quickly restores energy levels, enhances concentration, and improves work efficiency.
- **Strengthens the Immune System** – Cordyceps is highly valued in traditional medicine for its ability to regulate immunity, helping the body defend against illnesses.
- **Combats Fatigue** – This coffee helps alleviate both physical and mental exhaustion, making it ideal for individuals experiencing fatigue due to excessive work or stress.
- **Supports Kidney Health & Vitality** – Cordyceps is traditionally used to fortify kidney function, promote vitality, and enhance overall endurance.
- **Balances Overall Well-being** – The combination of coffee and Cordyceps helps reduce fatigue, strengthen the body, and counteract the negative effects of stress and a weakened immune system.

- Individuals with weak immunity who are prone to frequent illnesses.
- People experiencing chronic fatigue due to excessive mental or physical exertion.
- Night workers and students who often stay up late and require increased alertness.

>> Precautions

- Individuals sensitive to caffeine should consume with caution to avoid potential discomforts such as palpitations or insomnia.
- Not suitable for pregnant women, breastfeeding mothers, or children, as some components of Cordyceps may have unknown effects on fetal development and infant growth.



>> Product Benefits

Cordyceps Coffee is ideal for:

- Busy professionals who need quick mental refreshment and sustained energy.

>> Nutrition Knowledge

Maintaining a balanced lipid metabolism is essential for human health. When this balance is disrupted, it can cause significant harm to the body and become a major contributing factor to coronary heart disease, stroke, myocardial infarction, cerebral conditions, and other cardiovascular and cerebrovascular diseases. Therefore, it is crucial to adopt effective measures to regulate lipid metabolism.

Antilipemic Tea is formulated using carefully selected natural herbal extracts, with green tea as its primary ingredient. It is composed of gynostemma, cassia seed, lotus leaf, prepared fleece flower root, and other pure Chinese medicinal herbs. This blend helps reduce lipid levels, clear internal heat, aid digestion, and strengthen the spleen and stomach.

Gynostemma and prepared fleece flower root help replenish vital essence and boost energy, while lotus leaf and cassia dispel summer heat. The combination of "clear" and "supplement" properties ensures a complementary and balanced effect, aligning with the



>> Suitable For

- Individuals with hyperlipidemia.
- Elderly individuals seeking cardiovascular health support.

principles of traditional Chinese medicine, particularly the balance of yin and yang. This tea does not disrupt the body's natural coordination, nor does it weaken overall body strength. Furthermore, it is free from the toxic effects of chemical substances, making it a remarkable example of the benefits of Chinese herbal medicine.

A unique feature of this tea is its use of tea as a guiding herb, preserving the original taste and aroma. With a light, sweet flavor and a pleasantly mild fragrance, it promotes both health and relaxation.

The natural ingredients in this product effectively help reduce serum cholesterol and triglyceride levels while increasing high-density lipoprotein (HDL) cholesterol, commonly referred to as the "cleaner of the cardiovascular system".

Regular use of this tea supports overall cardiovascular health.

Frequent consumption may help:

- Reduce blood lipid levels and blood viscosity
- Lower the risk of atherosclerosis
- Regulate lipoprotein levels
- Improve arterial health and prevent cardiovascular and cerebrovascular diseases.

Long-term use can aid in fat reduction, weight management, improved vision, liver nourishment, enhanced skin health, and longevity. Additionally, it helps prevent premature graying of hair and tooth loss.



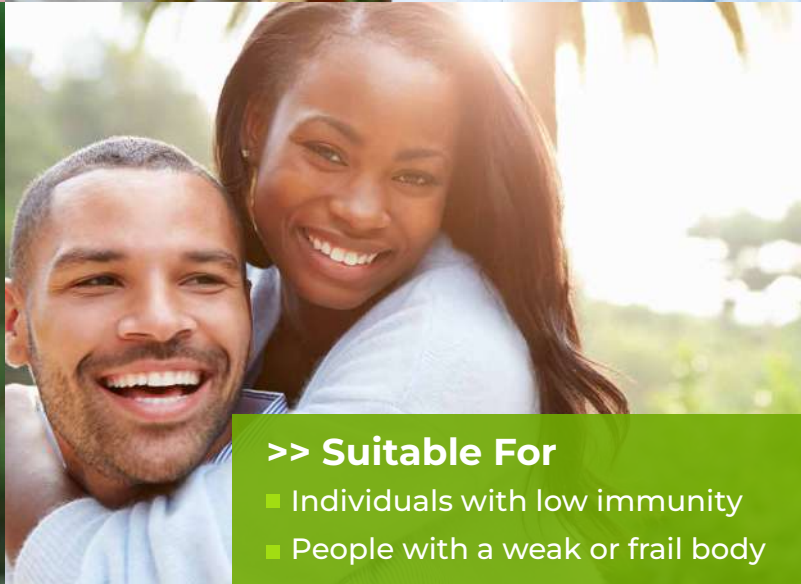
>> Nutrition Knowledge

Fungus of Immortality Tea offers various health benefits, including boosting immunity, reducing fatigue, and enhancing oxygen utilization. It is a natural wellness product, carefully extracted and refined from Ganoderma.

This tea has a wide range of applications. Ganoderma tea is known to nourish and support the five vital organs—the heart, lungs, liver, spleen, and kidneys—while replenishing vital essence. It is especially beneficial for individuals experiencing weakness in any of these organs.

Fungus of Immortality Tea plays a crucial role in enhancing the body's immune system. Unlike conventional medicines, its effects on certain conditions are unique. Instead of merely supplementing one specific nutrient, like many ordinary health products, this tea works holistically to restore balance and regulate overall body functions.

By activating the body's natural energy and metabolic processes, it strengthens immunity and supports the proper functioning of internal organs.



>> Suitable For

- Individuals with low immunity
- People with a weak or frail body

>> Nutrition Knowledge

The Ginkgo tree, also known as the white fruit tree, is a rare species that dates back to the glacial era. Ginkgo nuts have been historically documented for their therapeutic effects on asthma, gynecological conditions, and various other ailments.

The extract of Ginkgo biloba is widely recognized by the global health and wellness industry for its remarkable benefits in supporting cardiovascular and cerebrovascular health.

Extensive research, particularly in Germany, Britain, France, the U.S., South Korea, Brazil, and other countries, has demonstrated that Ginkgo biloba extract plays a significant role in slowing brain aging, enhancing memory, and helping prevent Alzheimer's disease.

Recent scientific studies have discovered that Ginkgo leaves contain over 20 essential microelements and active compounds, including ginkgolides and flavonoids, which contribute to its health benefits.

Ginkgo biloba has been found to provide supportive therapeutic effects for conditions such as:

- Cardiovascular diseases, stroke, cerebral thrombosis, and memory decline
- Diabetes, cirrhosis, and tinnitus
- Hypertension, hyperlipidemia, and coronary heart disease
- Senile dementia and age-related cognitive decline

Additionally, it helps delay aging, support weight management, and enhance immunity.



>> Suitable For

- Individuals with cardiovascular and cerebrovascular diseases, hypertension, heart disease, diabetes, and hyperlipidemia
- People who experience frequent fatigue
- Menopausal women, heavy smokers, and individuals with asthma or fatty liver.

>> Nutrition Knowledge

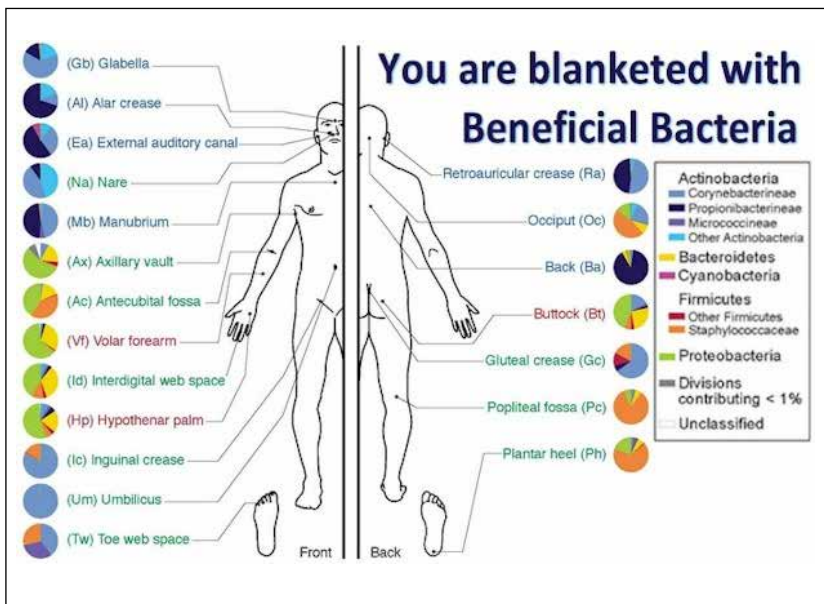
This product significantly increases the number of beneficial bacteria in the body. Within three weeks of consumption, the population of beneficial bacteria can increase by 2 to 10 times, reaching levels comparable to those of a healthy 20-year-old.

It helps regulate intestinal flora and promote bowel relaxation. Noticeable improvements occur within 1-2 days, with significant effects observed in 7 to 21 days.

It enhances the body's immune system. Four weeks after consumption, the number of T-lymphocytes in the body increases by 1.6 times, while B-lymphocytes double in number.

It aids in detoxification, promoting what we call "Intestinal Beauty." After four weeks of use, the intestinal toxin methyln-dole is reduced to 1/2.5 of its original level, while another toxin, cresol, decreases to half its original amount.

By helping to eliminate acne, freckles, and dark spots, this product contributes to a healthier gut and clearer skin. It is free from fat, cholesterol, hormones, preservatives, and artificial heat processing.



>> Suitable For

- Individuals with bowel function disorders, including constipation and diarrhea.
- Busy professionals and white-collar women Beauty is not just about outward appearance; "A healthy gut builds self-confidence."
- Executives, managers, and professionals experiencing endocrine disorders and intestinal flora imbalances due to work-related stress, frequent social engagements, and prolonged mental tension.
- People with low immunity, general weakness, or frequent colds.
- Those undergoing antibiotic treatments, radiotherapy, or chemotherapy, who may have a weakened immune system.

>> Product Features

Isomaltooligosaccharide Powder uses Isomaltooligosaccharide as its primary ingredient, significantly boosting the population of beneficial bifidobacteria in the intestine.

Clinical studies have confirmed its health benefits in improving gastrointestinal function, specifically in regulating intestinal flora and promoting bowel relaxation.

>> Nutrition Knowledge

The raw materials used in protein powder come exclusively from non-genetically modified soybeans. With a high protein content, a well-balanced amino acid profile, and low fat content, High Calcium Protein Powder is particularly rich in calcium, offering a more balanced and comprehensive nutritional profile.

Beyond serving as a protein supplement, it also helps reduce the risk of coronary heart disease and is regarded as a premium plant-based protein source for a scientifically balanced diet.

This protein powder is especially beneficial for fetuses, infants, adolescents, and the elderly. As we all know, protein is the fundamental building block of life and a key component of cells and tissues. It plays a vital role in cell formation, tissue repair, and metabolic regulation, supporting intellectual development and other essential physiological functions.

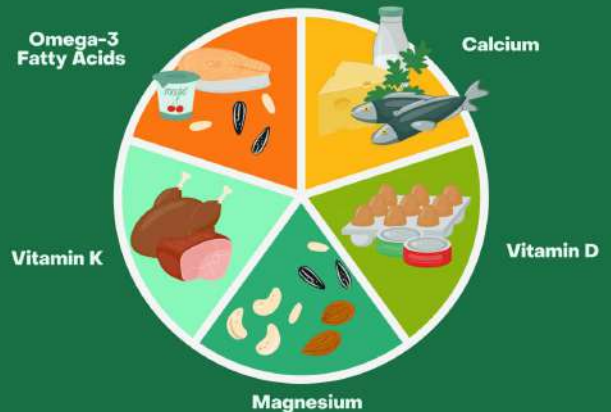


>> Suitable For

- **Pregnant and lactating women:** In addition to meeting their own nutritional needs, pregnant and breastfeeding women require extra protein to support the growth and development of the fetus and infant.
- **Nutritionists recommend that during the fifth month of pregnancy** a crucial stage for fetal development pregnant women should consume 100-150g of soy protein daily, in addition to eggs and meat, for optimal benefits.
- **Children and adolescents:** During periods of rapid growth and development, metabolism accelerates, increasing the body's demand for nutrients. Adequate protein intake plays a key role in supporting physical growth and cognitive development.
- **Vegetarians and individuals with dietary restrictions:** Those who avoid animal protein due to dietary choices or health concerns can benefit from this plant-based protein source.
- **The elderly, individuals in poor health, and those in post-surgical recovery:** Due to weakened digestion and absorption capacities, these individuals require easily digestible protein to support tissue repair, immunity, and overall well-being.



What Vitamins And Minerals Are Important For Bone Health?



Suitable For Vegetarians.



The elderly and those with frail bodies.



Pregnant and Breastfeeding Mothers.



Supplements for Post-Surgery Patients or Accident Survivors.

Eating method and consumption.

15g at a time, once a day.

>> Product Knowledge

Saw Palmetto Myrtle Polypeptide Capsules are formulated with saw palmetto extract, damiana extract, and polypeptides, all of which contribute to male reproductive health and overall well-being.

Saw palmetto is rich in fatty acids and phytosterols, which support prostate health. Damiana extract contains flavonoids and alkaloids, known for their ability to regulate endocrine function and promote relaxation.

Polypeptides, composed of multiple amino acids, help enhance metabolism and boost cellular vitality.

To ensure stability and proper formulation, additional ingredients such as microcrystalline cellulose and silicon dioxide may be included in the product.

>> Product Efficacy

This supplement offers a synergistic effect in improving male health through the combined benefits of its key ingredients:

- **Prostate Health:** Saw palmetto supports prostate function, helping to relieve symptoms of prostate hyperplasia, such as frequent urination, urgency, and difficulty urinating.
- **Hormonal Balance & Stress Relief:** Damiana extract helps regulate endocrine function, reduce anxiety and tension, and improve sleep quality.
- **Metabolism & Immunity:** Polypeptides promote healthy metabolism, boost cell vitality, and strengthen immune function.
- **Reproductive Health:** The combination of these ingredients effectively supports male reproductive health, hormonal balance, and overall body resilience.



>> Suitable For

This supplement is beneficial for:

- Men experiencing prostate issues, including prostatic hyperplasia, prostatitis, and urinary abnormalities.
- Individuals under chronic stress, experiencing mental tension, anxiety, and sleep disorders.
- People with low immunity, who frequently get sick, feel fatigued, or have reduced energy levels.
- Those with endocrine imbalances, leading to physical dysfunctions and decreased vitality.



>> Product Features & Precautions

- Not suitable for minors, as their bodies are still developing, and these ingredients may interfere with normal growth.
- Strictly prohibited for pregnant and breastfeeding women, as the effects of the ingredients on fetal and infant health remain unclear.
- Caution for individuals taking medication, particularly those treating prostate conditions or neurological disorders.
- Consultation with a doctor is necessary before use to avoid potential drug interactions and ensure safety and efficacy.



Men's Vital

Boost



>> Nutrition Knowledge

NMN 20000 is a revolutionary supplement that brings significant changes to the body. Within just eight days of use, the body starts feeling healthier and more energetic. After a month of continuous use, individuals experience increased strength and vitality, feeling youthful and rejuvenated.

This product is designed as a powerful anti-aging solution, working at the cellular level to strengthen DNA, combat fatigue, and restore optimal energy levels. NMN enhances sleep quality, allowing users to wake up feeling refreshed and revitalized. Additionally, it promotes skin renewal, helping to reduce wrinkles, blemishes, and dark circles around the eyes, leaving the face looking radiant and youthful.



>> Suitable For

- Individuals looking to slow down the aging process and maintain youthful vitality.
- Those experiencing chronic fatigue, low energy levels, and general body weakness.
- People suffering from poor sleep quality, frequent tiredness, or lack of mental clarity.
- Anyone looking to improve their skin health, reduce wrinkles and blemishes, and achieve a glowing complexion.

>> Product Features

- **Anti-Aging Benefits** – Supports DNA repair and cellular regeneration, slowing down the effects of aging.
- **Energy Boosting** – Helps restore natural body energy, eliminating fatigue and lethargy.
- **Enhanced Sleep Quality** – Promotes deeper, more restful sleep, ensuring you wake up feeling refreshed.
- **Skin Rejuvenation** – Improves skin elasticity, reducing wrinkles, blemishes, and dark circles for a youthful glow.
- **Overall Wellness** – Strengthens the body's natural functions, making you feel strong, healthy, and vibrant.



>> Eating Method and Consumption

- Take 2 capsules per day with a glass of warm water.
- It is best to consume NMN in the morning on an empty stomach for maximum absorption and effectiveness.
- Consistent daily use is recommended to achieve long-term benefits in energy levels, anti-aging effects, and overall well-being.



>> Product Knowledge

Dandelion Sanjie Hard Capsule is a natural herbal supplement formulated with dandelion extract as its primary ingredient. Dandelion is rich in beneficial compounds such as dandelion sterol, dandelion picrin, inulin, and pectin, which contribute to its medicinal properties.

Additionally, some formulations may include complementary herbal extracts like honeysuckle and Prunella to enhance its efficacy.

- Honeysuckle contains chlorogenic acid and luteolin, which help clear heat, detoxify the body, and relieve wind-heat symptoms.
- Prunella (Summer hay) is rich in triterpenoid saponins and rutin, which aid in clearing the liver, reducing inflammation, and alleviating swelling.

>> Product Benefits

According to Traditional Chinese Medicine (TCM) and modern research, dandelion is known for its ability to clear heat, detoxify the body, reduce swelling, and dissolve nodules.

With the addition of honeysuckle and Prunella, the formula is further enhanced to provide relief from breast nodules, thyroid nodules, and inflammation caused by heat toxicity, Qi stagnation, and blood stasis. The supplement helps in:

- Alleviating breast hyperplasia and breast nodules
Reducing thyroid nodules in individuals with normal thyroid function.
- Soothing throat inflammation, gum swelling, and other heat-related symptoms.
- Relieving localized swelling, pain, and discomfort.



>> Suitable For

Dandelion Sanjie Hard Capsule is recommended for:

- Women experiencing breast hyperplasia and breast nodules.
- Individuals with thyroid nodules but without significant thyroid dysfunction.
- People suffering from heat toxicity symptoms, such as throat inflammation, swollen gums, or mild nodules.



>> Product Features

- **Natural Herbal Formula** – Made with dandelion extract, honeysuckle, and Prunella to support detoxification and inflammation relief.
- **Supports Women's Health** – Helps manage breast hyperplasia and breast nodules.
- **Aids Thyroid Health** – Beneficial for those with thyroid nodules without affecting thyroid function.
- **Detoxifying & Anti-Inflammatory** – Clears heat, reduces swelling, and alleviates throat and gum inflammation.
- **Traditional Chinese Medicine-Based** – Combines time-tested herbal remedies with modern research.



>> Product Knowledge

Natto Dilong Capsule is a natural supplement formulated with nattokinase from natto and lumbrokinase from earthworm extract. Nattokinase is a serine protease enzyme produced by *Bacillus subtilis natto*, known for its powerful ability to dissolve blood clots.

Lumbrokinase, a proteolytic enzyme derived from earthworms, helps reduce blood viscosity and improve overall hemorheological indexes.

>> Product Efficacy

The synergistic effects of nattokinase and lumbrokinase work effectively to dissolve thrombi (blood clots) and reduce blood viscosity, thereby preventing and improving cardiovascular and cerebrovascular diseases such as myocardial infarction (heart attack) and brain infarction (stroke). Additionally, these enzymes help to:

- Unclog blood vessels
- Promote healthy blood circulation
- Alleviate discomfort caused by poor circulation



>> Suitable For

This product is recommended for individuals who are at risk of or suffering from:

- Hyperlipidemia (high blood lipid levels).
- Hypertension (high blood pressure).
- Hyperglycemia (high blood sugar levels).
- High blood viscosity.
- Thrombosis risk (e.g., bedridden patients, post-surgical recovery).
- High-risk cardiovascular and cerebrovascular conditions, including those who are obese, long-term smokers, or have a sedentary lifestyle.



>> Product Features

- **Natural thrombolytic agents** – Contains nattokinase and lumbrokinase, which help dissolve blood clots naturally.
- **Supports cardiovascular health** – Helps reduce the risk of heart disease and stroke by improving blood flow.



- **Enhances blood circulation** – Promotes better oxygen and nutrient delivery throughout the body.
- **Reduces blood viscosity** – Helps prevent conditions associated with thickened blood, such as clot formation.
- **Aids in vascular cleansing** – Clears blocked blood vessels and supports overall vascular health.

>> Caution

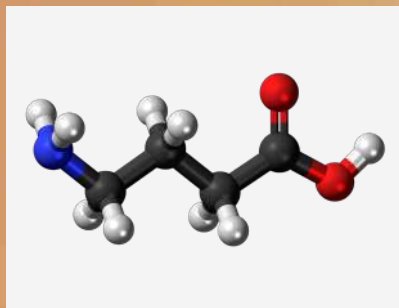
- Individuals taking anticoagulant medications (such as warfarin, aspirin, etc.) must consult a doctor before use, as Natto Dilong Capsules also have anticoagulant effects and may increase the risk of bleeding.
- Not suitable for individuals with bleeding disorders (e.g., hemophilia, gastric ulcer bleeding).
- Pregnant and breastfeeding women should avoid using this product to prevent potential adverse effects on the fetus or baby.

>> Product Knowledge

The Saffron Aminobutyric Acid Hard Capsule is a natural supplement designed to support mental relaxation, improve sleep quality, and reduce fatigue.

The primary ingredients include saffron extract and gamma-aminobutyric acid (GABA), both known for their powerful health benefits.

- Saffron extract contains crocin, dimethyl crocin, and other glycosides, which give it strong antioxidant properties and the ability to promote blood circulation.
- Gamma-aminobutyric acid (GABA) is a non-protein amino acid that acts as a key inhibitory neurotransmitter in the central nervous system, helping to relieve anxiety, calm the mind, and improve sleep quality.
- The formulation may also include starch, magnesium stearate, and other stabilizing agents to maintain product integrity and effectiveness.



>> Product Features & Benefits

- **Promotes Relaxation & Reduces Anxiety** – GABA helps to calm the nervous system, reducing mental tension and stress.
- **Enhances Sleep Quality** – The combination of saffron and GABA helps individuals who struggle with insomnia, frequent waking, or light sleep.
- **Supports Blood Circulation** – Saffron promotes healthy blood flow, ensuring the brain and other organs receive essential nutrients.
- **Combats Fatigue & Boosts Energy** – By improving oxygen supply and circulation, it helps alleviate physical exhaustion and mental fatigue.
- **Regulates Endocrine Function** – It contributes to hormonal balance, helping to improve complexion and overall well-being.

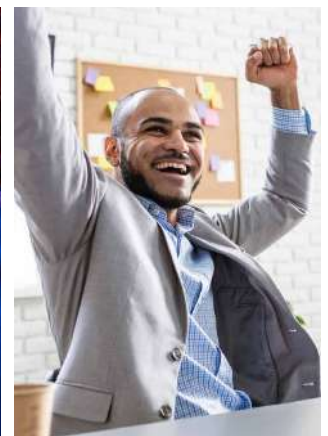
>> Suitable For

This supplement is ideal for individuals who:

- Experience chronic stress, anxiety, or mental exhaustion.
- Struggle with insomnia or poor sleep quality.
- Frequently feel tired due to poor blood circulation.
- Suffer from hormonal imbalances leading to poor skin health or general fatigue.

>> Precautions

- Pregnant women should avoid use, as saffron's blood-activating properties may increase the risk of miscarriage.
- Lactating mothers should use with caution, as active ingredients may transfer through breast milk.
- Not suitable for children, as their developing bodies are not adapted to such supplements.
- Individuals allergic to saffron or GABA should not consume this product.



>> Nutrition Knowledge.

Propolis is often referred to as “purple gold” or “soft gold” due to its limited availability and high value. In traditional Chinese medicine, propolis is recognized for its eight key functions, including:

- Fighting harmful microorganisms
- Providing sedative and anesthetic effects
- Promoting tissue repair
- Protecting the cardiovascular system
- Supporting liver health
- Exhibiting anti-tumor properties
- Neutralizing free radicals
- Offering all these benefits with no side effects

The flavonoids and polysaccharides in propolis help boost immunity and act as a broad-spectrum natural antibiotic. Its anti-inflammatory properties are even more effective than aspirin, making it useful in treating chronic inflammation caused by various pathogens. It is beneficial for conditions such as chronic rhinitis, pharyngitis, gastritis, hepatitis, and gynecological inflammations.

Propolis also contains terpenoids and catalpol, which mimic the function of insulin. These compounds help promote the synthesis of liver glycogen from exogenous glucose, effectively lowering blood sugar levels.

As a natural antioxidant, propolis helps protect cells from free radical damage while also preventing and managing complications associated with diabetes. It plays a vital role in regulating blood lipid levels and blood pressure, supporting cardiovascular health, and effectively inhibiting tumor growth.



Eating method and consumption.

2 times a day, each time 2 tablets.

>> Product Features.

Eternal Propolis Soft Capsules are made from propolis collected by black bees in Northeast China and are refined using advanced CO₂ supercritical fluid purification technology, also known as the "purification preservation method".

Through a six-month precipitation and membrane absorption process, the bioactive compounds in propolis are preserved, while heavy metals are completely removed. This ensures a high concentration of flavonoids, meeting all national safety and quality standards. Additionally, with the use of water-soluble technology, the capsules are designed for maximum absorption and bioavailability, ensuring optimal benefits for the human body.

Efficacy Components

Every 100g Contains

Total Flavonoids

5.02g



>> Suitable For

- Individuals with diabetes, high blood sugar, high cholesterol, or hypertension
- People with weakened immunity, including the elderly
- Women experiencing hormonal imbalances, hyperpigmentation, or wrinkles
- Individuals suffering from various inflammatory conditions, such as rhinitis, pharyngitis, skin inflammation, and gynecological infections
- Patients with gastritis, gastric ulcers, liver disease, or hepatitis.



ETERNAL

PROPOLIS

SOFT CAPSULES



FOOD SUPPLEMENT

NET CONTENT: 35g

>> Nutrition Knowledge

Vitamin A: Helps maintain the health of epithelial cells and enhances immune function. A deficiency can lead to night blindness, dry eyes, and in severe cases, total blindness.

Vitamin B1: A key component of various coenzymes in the body, involved in carbohydrate metabolism and essential for the normal functioning of the digestive, nervous, and circulatory systems.

Vitamin B2 (Riboflavin): Supports the health of the skin, mouth, and eyes. A deficiency may cause ulcers, glossitis (inflammation of the tongue), and cheilitis (cracked lips or sores at the corners of the mouth).

Vitamin B6: Acts as a coenzyme in amino acid metabolism. A deficiency can lead to anemia, ulcers, and glossitis, and in severe cases, may result in eclampsia.

Vitamin C: Promotes nutrient metabolism and supports healthy growth and development in children. A deficiency can cause leg pain, bleeding gums, slow wound healing, and a weakened immune system.

Vitamin E: Functions as a powerful antioxidant and plays a crucial role in sexual organ development and embryonic growth.



Eating method and consumption.

1 times a day, 1 capsule each time



>> Product Features

Eternal Multivitamin Tablets are formulated using high-quality natural vitamins and minerals as raw materials.

Designed to align with the physiological characteristics of Africans, the formula is scientifically balanced to comprehensively enhance the body's resistance to diseases.

Efficacy Components			Each Capsule Contains	
Vitamine B1 1.2mg	Vitamine B6 1.2mg	Vitamine E 10mg	Selenium 0,018mg	Zing 10mg
Vitamine B2 1.0mg	Vitamine A 0.3mg	Vitamine C 45mg	Iron 12mg	Magnesium 70mg

>> Suitable For

- Individuals with skin conditions
- People seeking to improve vision
- Sub-health groups, including those who stay up late, consume alcohol, smoke, or frequently attend parties
- Individuals with poor nutrition and irregular eating habits
- People with low immunity
- Those looking to enhance their beauty and achieve brighter skin



>> Nutrition Knowledge

Aloe is widely recognized as an “all-purpose herb” due to its numerous health and skincare benefits. It contains aloin, aloe polysaccharides, plant proteins, vitamin A, vitamin B6, vitamin B12, and eight essential amino acids, along with vital minerals that support skin health.

Aloe helps enhance skin elasticity and firmness, making the skin soft, smooth, and youthful while preserving its natural glow.

Aloe emodin and other active compounds can boost appetite, support digestive health, ease bowel movement, and strengthen overall physical fitness, all while being free from side effects and drug dependency.

Aloe tincture, aloe polysaccharides, and essential vitamins provide excellent benefits such as reducing inflammation, fighting bacteria, nourishing, moisturizing, and brightening the skin.



Eating method and consumption.

2 capsule at a time, twice a day.

>> Product Features

ETERNAL Aloe Soft Capsules are extracted from fresh Aloe leaves sourced from Curaçao, USA, and refined using an advanced super-freezing technique.

This method preserves the active compounds in Aloe lyophilized powder, ensuring a high concentration of Aloe glycosides, organic acids, and essential vitamins for maximum health benefits.

>> Suitable For

- Individuals looking to detoxify the body and enhance skin beauty
- Those seeking to brighten skin and reduce acne
- People with poor digestion or constipation

Functional Components

Each 100g Contains

Aloe Glycoside

763mg



>> Nutrition Knowledge

Soybean Soft Capsule (Procyanidins OPC) is one of the most effective plant-derived antioxidants ever discovered, with 30 to 50 times the antioxidant power of Vitamin C and Vitamin E.

Soybean Soft Capsule helps protect the skin from damage caused by free radicals, enhances skin elasticity, reduces melanin production, brightens the skin, and fades pigmentation such as chloasma (melasma). As a result, it helps combat skin aging and promotes a youthful appearance.

Additionally, Soybean Soft Capsule contains natural phytoestrogens, which not only improve skin smoothness and enhance feminine beauty but also help regulate the endocrine system. This makes it effective in alleviating irregular menstruation and menopause-related symptoms.



>> Suitable For

- Individuals looking to enhance skin beauty, maintain whiteness, moisture, and elasticity, and slow down aging.
- People with sensitive skin who want to protect against UV damage.
- Women experiencing hormonal imbalances, irregular menstruation, or menopause symptoms.
- Urban professionals who spend long hours using computers and mobile devices.
- Individuals prone to fatigue and low energy levels.



Eating method and consumption.

2 times a day, 2 tablets each time

>> Product Features

Eternal Soybean Soft Capsule is made using high-quality red grape seeds sourced from regions known as “golden latitudes”, with an OPC (Oligomeric Proanthocyanidins) concentration as high as 95%.

This product is manufactured using advanced carbon dioxide extraction technology and is enriched with soy isoflavones and Vitamin E—two of the most popular ingredients for women's skincare and wellness. This unique formulation helps eliminate allergens, target multiple skin concerns, and enhance skin whitening, providing comprehensive skin and health benefits.

Functional Components	Every 100g Contains
Procyanidins	7.53g
Genistein	9.6mg
Vitamin E	1.223g

beauty

is cute.



>> Nutrition Knowledge

Eternal Spirulina Tablets are made from pure, pollution-free spirulina sourced from Chenghai Lake in Yunnan, one of the world's three largest natural spirulina reserves. This 100% natural superfood provides essential nutrients that are easily absorbed by the human body.

Spirulina's cell walls are extremely thin, making it one of the most bioavailable sources of nutrition, with an absorption rate of up to 95%. It is recognized as one of the most complete, well-balanced, and nutrient-dense natural foods available, offering comprehensive nourishment that is easily utilized by the body.

BENEFITS OF SPIRULINA:

- Boosts immunity and enhances resistance to radiation
- Supports weight management and prevents tumor formation
- Regulates pH balance, detoxifies the body, and promotes digestive health
- Improves skin health, reduces blemishes, and prevents skin roughness
- Lowers cholesterol, regulates blood lipids, and helps prevent hypertension and cardiovascular diseases
- Aids in diabetes management by alleviating symptoms and balancing blood sugar levels
- Improves nutrition in adolescents and supports healthy growth
- Promotes recovery for individuals with rheumatoid arthritis



>> Suitable For

- Individuals with low immunity, the elderly, and those recovering from illness
- People engaged in physically demanding work or intensive exercise
- Individuals with high or low blood pressure
- Those suffering from malnutrition, poor digestion, anemia, or following a restrictive diet
- Cancer patients, especially those undergoing radiation or chemotherapy



Eating method and consumption.

3 times a day, 8 tables each time

>> Product Features

Eternal Spirulina Tablets are made from pure, pollution-free spirulina harvested from Chenghai Lake in Yunnan. This lake is one of the world's three largest spirulina-producing regions, ensuring premium quality and natural purity.

The tablets are processed using advanced techniques, including biotechnology sterilization, drying, and precision tableting, to preserve the full nutritional value of spirulina. They are made entirely from pure algae powder, with no added starch or artificial additives, ensuring a 100% natural and highly effective supplement.

Functional Components	Every 100g Contains
Protein	57.1g
B-carotene	77.1 mg



Perfect for Children,
Mothers, and Fathers



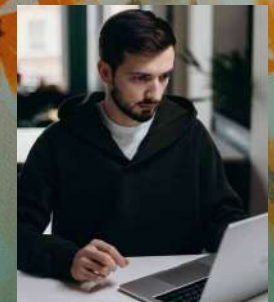
Middle-aged
and Elderly



Beauty



Physical Health



Those with Busy
Work Schedules

>> Nutrition Knowledge

Lecithin is a phospholipid composed of fatty acids, glycerol, phosphoric acid, and choline, and is widely present in cell membranes. Lecithin is an excellent emulsifier and acts as a natural "cleaner" for blood vessels.

It helps emulsify and eliminate excess cholesterol and neutral fats from blood vessels, thereby preventing cardiovascular and cerebrovascular diseases while effectively regulating blood lipid and cholesterol levels.

The choline found in lecithin plays a crucial role in nerve function. It serves as a key component in neurotransmitter activity, acting as a precursor to acetylcholine, which is essential for brain function and communication between nerve cells. This makes lecithin highly beneficial for brain development and cognitive function.

The National Food and Nutrition Institute has officially recognized choline as a daily essential nutrient for the body. In addition to its liver-protective properties, lecithin helps remove fat from the liver, thereby preventing gallstones. It also has a lubricating effect on the intestines, helping to prevent constipation.



>> Suitable For

- Individuals looking to prevent hyperglycemia, hyperlipidemia, hypertension, cardiovascular, and cerebrovascular diseases.
- Those who wish to enhance memory and reduce the risk of Alzheimer's disease.
- Individuals who consume alcohol frequently, as well as those with liver function disorders or gallstones (cholelithiasis).



Eating method and consumption.

1 capsule at a time, Twice a day

>> Product Features

ETERNAL Lecithin Soft Capsules are made from premium-quality, non-GMO North American soybean lecithin, sourced from the U.S. Central Soybean Company. These capsules contain no added salad oil, ensuring a 100% pure formulation.

The product has been successfully exported to the U.S., Germany, Canada, and several other countries, meeting international quality standards.

Functional Components	Every 100g Contains
Phosphatidylcholine	22.3g



Lecithin

Sharp Mind, Strong Brain.



It helps strengthen memory and prevent Parkinson's disease in the elderly.



It is beneficial for controlling the significant increase in fat, sugar, blood pressure, and stroke.



>> Nutrition Knowledge

The Benefits of Folic Acid, Iron, and Calcium:

FOLIC ACID:

- Helps prevent megaloblastic anemia, improves anemia, and promotes a healthy, rosy complexion.
- Reduces the risk of fetal neural tube defects during pregnancy.
- Lowers the likelihood of cardiovascular diseases.
- Helps maintain a stable mood and alleviates constipation caused by folic acid deficiency.

IRON:

- Plays a crucial role in the production of hemoglobin and myoglobin, supporting blood formation and overall health.
- Enhances energy metabolism, aids in the breakdown and metabolism of substances in the liver, and facilitates the conversion of beta-carotene into Vitamin A.
- Promotes the absorption of Vitamin B and stimulates antibody production, thereby strengthening immunity.

CALCIUM:

- Strengthens bones and teeth.
- Helps prevent muscle cramps.
- Regulates blood pressure and heart rate.



Eating method and consumption.

2 times a day,
2 capsules each time

>> Product Features


Eternal Folic Acid Soft Capsule is formulated based on the physiological needs of women of childbearing age.

It contains natural folic acid extracted from alfalfa and green algae, combined with iron and calcium, providing effective nutritional support during pregnancy, pre-pregnancy, and lactation.



>> Suitable For

- Women, especially those with anemia, cold sensitivity, and poor circulation (cold hands and feet).
- Pregnant, lactating, or women planning for pregnancy. Individuals with nutritional deficiencies, frequent fatigue, dizziness, and headaches.
- People experiencing poor concentration, reduced learning ability, and declining memory.
- Those who consume little or no animal liver and dark green vegetables.



It helps to prevent colds and relieve joint pain.

It prevents the reproductive organs from deteriorating quickly.

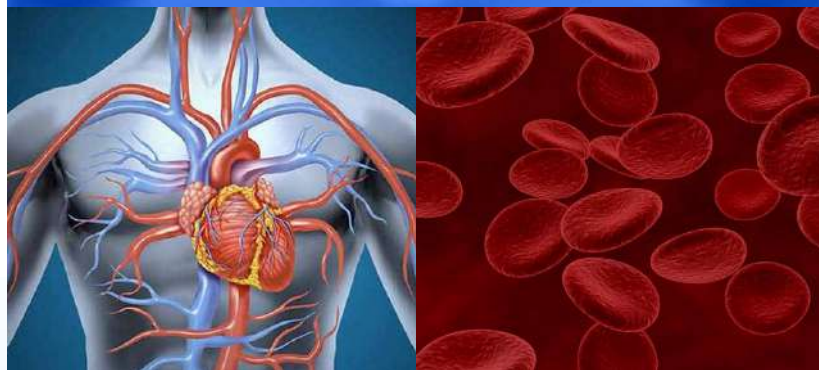
It strengthens the vitality of the body's cells.

>> Nutrition Knowledge

Fish oil is rich in unsaturated fatty acids, specifically EPA (eicosapentaenoic acid) and DHA (docosahexaenoic acid), which are essential nutrients that the human body cannot synthesize on its own.

EPA, often referred to as the "vascular cleaner", helps regulate blood lipids, preventing platelet adhesion and aggregation. It effectively reduces serum total cholesterol and triglycerides, increases high-density lipoprotein (HDL), and plays a crucial role in preventing atherosclerosis, coronary heart disease, stroke, and other cardiovascular conditions.

DHA, also known as "Brain Gold", is vital for brain function. It helps activate brain cells, enhance nerve signal transmission, improve memory, slow down aging, support vision health, and reduce the risk of Alzheimer's disease.



>> Suitable For

- Middle-aged and elderly individuals with hyperlipidemia or cardiovascular and cerebrovascular conditions.
- People experiencing memory decline, vision impairment, or early signs of presbyopia (age-related farsightedness).
- Individuals with poor dietary habits, including those who frequently consume fried, pickled, or high-fat foods.



Eating method and consumption.

1 capsule at a time, once a day

>> Product Features

ETERNAL is the only company in China that operates a fully integrated fish oil production process, from deep-sea fishing to fish oil refinement and capsule manufacturing. It is also among the leading enterprises involved in establishing industry standards.

ETERNAL's Fish Oil Soft Capsules are made from pollution-free deep-sea cod sourced from Northern Europe and undergo an advanced 8-stage molecular distillation process to ensure purity and effectiveness.

Out of 17 key physicochemical indicators, 15 exceed the standards set by Europe and America, demonstrating the superior quality of the product.

Functional Components	Each 100g Contains
EPA	170mg
DHA	160 mg



CHAGUO BORA LA AFYA YAKO



Prevents chronic diseases of the heart and brain.



It helps prevent and manage blood sugar levels in cases of diabetes.



It helps regulate blood pressure.

>> Nutrition Knowledge

Vitamin E is a fat-soluble vitamin, also known as tocopherol. It plays a vital role in promoting the secretion of pituitary gonadal hormones, enhancing sexual function, and supporting reproductive health. It aids in sperm formation, boosts sperm vitality, and improves ovarian function by stimulating follicle growth, enlarging corpus luteum cells, and strengthening progesterone activity, ultimately increasing the chances of conception.

Additionally, Vitamin E is a powerful antioxidant, serving as the body's primary defense against free radicals.

Studies show that individuals who regularly consume Vitamin E experience a slower aging process. Recent research has also found that Vitamin E can inhibit lipid peroxidation within the eye lens, helping to dilate peripheral blood vessels, improve blood circulation, and prevent the onset and progression of myopia (nearsightedness).



>> Suitable For

- Individuals needing Vitamin E supplementation.
- Women exposed to the sun for long periods, experiencing coarse skin, reduced elasticity, and pigmentation issues.
- Women with endocrine imbalance, irregular menstruation, mood swings, or insomnia.
- Women with a history of habitual miscarriage, those trying to conceive, or those who are pregnant
- Individuals who are physically weak or have low immunity.

Eating method and consumption.

1 times a day, each time 1 capsule



>> Product Features

Eternal Natural Vitamin E Soft Capsules are made from high-quality raw materials imported from Germany and are extracted from natural plant sources using advanced purification technology, making them suitable for long-term use.

Scientific studies have demonstrated that the antioxidant and anti-aging effects of natural Vitamin E are significantly stronger—several times higher than synthetic Vitamin E.

Efficacy Components	Each Capsule Contains
Vitamin E	9.51g



>> Nutrition Knowledge

Ganoderma Lucidum Spore Powder Soft Capsule is derived from the essence of Ganoderma Lucidum, a highly valued medicinal mushroom. It is rich in Ganoderma Lucidum polysaccharides, peptides, triterpenes, organic germanium, and other beneficial compounds. This supplement supports overall health by strengthening the body, enhancing vitality, calming the nerves, and alleviating discomfort.

It possesses anti-aging properties, helps boost the activity of natural killer (NK) cells, enhances the phagocytic ability of macrophages, and strengthens cellular immunity. Additionally, studies on experimental animals have shown that it may inhibit tumor growth, extend the lifespan of tumor-affected subjects, and regulate the immune system. It also has sedative and analgesic effects and can reduce inflammation caused by chemical agents, demonstrating a broad spectrum of pharmacological benefits.

This supplement is particularly beneficial for individuals undergoing recovery from emaciation, insomnia, chronic pain, poor appetite, leukopenia (low white blood cell count), and general weakness caused by digestive tract tumors or post-surgical chemotherapy.



>> Suitable For

- Patients undergoing chemotherapy or post-surgery recovery to strengthen the body and improve symptoms.
- Individuals with weak immunity or those prone to frequent illnesses.
- People recovering from severe illness, experiencing mental exhaustion, overactive nerves, sleep disturbances, fatigue, or memory decline.
- Individuals with chronic conditions such as cardiovascular diseases, diabetes, chronic hepatitis, and age-related health issues.
- Elderly individuals looking to slow down aging, enhance beauty, and maintain overall well-being.



Eating method and consumption.

2 times a day, each time 2 capsules

>> Product Features

This product is designed to nourish the body, enhance vitality, support overall well-being, calm the nerves, and relieve discomfort. It provides comprehensive health benefits, making it an excellent choice for those seeking natural immune support, anti-aging effects, and overall wellness.



>> Nutrition Knowledge

Maintaining good oral health is essential for overall well-being. A well-formulated toothpaste can provide comprehensive dental care, ensuring strong teeth, healthy gums, and long-lasting freshness.

>> Product Features

This toothpaste offers triple protection, combining natural and scientifically proven ingredients to promote optimal oral hygiene:

1. Cavity Prevention & Strengthening

- Formulated with White Tea Essence, Calcium Glycerophosphate (CaGP), and Xylitol, this toothpaste helps strengthen tooth roots, reinforce enamel, and prevent cavities. Additionally, it is CFC-free and offers moth-proofing benefits, making it a safe and effective choice for daily use.

2. Deep Cleaning & Antibacterial Protection

- Infused with antibacterial TCS and high-quality soft abrasives, this toothpaste effectively removes plaque and bacteria, ensuring a clean, fresh, and healthy oral cavity.

3. Gum Strengthening & Protection

- A unique blend of Strontium Chloride and Aloe Extract helps fortify the gums, strengthen tooth roots, and enhance overall dental resilience.



>> Method of Application

- Recommended Usage:** Brush every morning and night for optimal dental care.
- Refreshing Sensation:** The toothpaste has a mild, refreshing scent that promotes fresh breath and long-lasting cleanliness.



>> Nutrition Knowledge

This bath soap is formulated from the Aloe Vera plant, renowned for its natural healing, moisturizing, and skin-rejuvenating properties. It effectively removes impurities, unclogs pores, and enhances air circulation within the skin, allowing essential nutrients to be better absorbed and retained.

The soap works to soften and strengthen the skin, leaving it feeling smooth, refreshed, and radiant. It is particularly beneficial for individuals with oily skin and other skin concerns, helping to restore a healthy and balanced complexion. Additionally, it possesses anti-bacterial properties, aiding in the elimination of harmful bacteria from the skin's surface and bloodstream while offering protection against environmental pollutants.



>> Product Features

- **Made from Natural Aloe Vera** – Derived from the Aloe Vera plant, known for its soothing and healing properties.
- **Deep Cleansing** – Effectively removes impurities, unclogs pores, and allows better airflow to the skin.
- **Nutrient Retention** – Helps the skin retain essential nutrients for improved health and appearance.
- **Skin Softening & Strengthening** – Leaves the skin feeling soft, smooth, and strengthened.
- **Radiant Glow** – Enhances the skin's natural glow, promoting a youthful and healthy look.
- **Ideal for Oily & Problematic Skin** – Specially beneficial for individuals with oily skin or skin-related issues.
- **Antibacterial Protection** – Helps eliminate disease-causing bacteria, promoting skin health and hygiene.
- **Protective Barrier** – Shields the skin from harmful environmental factors and pollutants





ETERNAL
Whitening o sabão
ETERN
Proteção completa saudável
Fórmula de
Banho natural. Toda a família se beneficia.
Peso líquido na embalagem: 120g



>> Product Knowledge

Roselle and Cranberry Solid Drink is a premium health supplement carefully formulated to cater to women's unique health needs. Infused with natural Roselle and Cranberry extracts, this drink offers a powerful blend of antioxidants, urinary tract support, digestive aid, and immune-boosting properties.

- Roselle extract is packed with anthocyanins, flavonoids, and organic acids, which help fight free radicals, enhance skin radiance, and support digestion.
- Cranberry extract is rich in vitamin C, proanthocyanidins, and ursolic acid, known for strengthening immunity and preventing urinary tract infections (UTIs), which are common among women.
- To enhance both taste and nutritional benefits, this formula may also include natural fruit powders and mild sweeteners like fructooligosaccharides.

This solid drink is the perfect daily supplement for women seeking to enhance their beauty, vitality, and overall well-being.



>> Product Features

- **Promotes Feminine Health** – Cranberry extract helps prevent and reduce the recurrence of urinary tract infections (UTIs), a common concern for women.
- **Powerful Anti-Aging & Skin Glow** – Rich in antioxidants (anthocyanins & flavonoids) that protect against premature aging, enhance skin elasticity, and maintain a youthful glow.
- **Supports Hormonal Balance & Digestive Health** – Organic acids from Roselle help regulate digestion, reduce bloating, and promote gut health, essential for women's overall wellness.
- **Boosts Immunity & Energy** – High vitamin C content strengthens the immune system, keeping you strong, active, and resilient.
- **Naturally Delicious & Refreshing** – A light, fruity, and pleasantly sweet taste makes it enjoyable to drink daily.



>> Suitable For

This product is specially designed for:

- Women who prioritize self-care and want to enhance their natural beauty and vitality.
- Women prone to urinary tract infections (UTIs) and looking for a natural way to prevent them.
- Those seeking digestive balance, especially women experiencing bloating, indigestion, or mild stomach discomfort.
- Women with busy lifestyles who need an extra boost of immunity and energy to keep up with their daily routine.

>> Precautions

- Women with high stomach acid or conditions such as gastric ulcers should consume this product with caution, as its acidity may cause discomfort.
- If you have allergies to Roselle or Cranberry, avoid this product to prevent allergic reactions.

Nature's Secret

For Women's Wellness!



ETERNAL

ROSEBERRY AND
CRANBERRY
SOLID DRINK

Net Content: 30g (3g/bag×10 bags)

Net Content: 30g (3g/bag×10 bags)





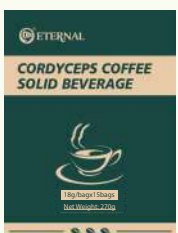
◀ REISHI COFFEE SOLID DRINK

Boosts mental clarity and immune health with a powerful blend of coffee and Reishi extract.



◀ VITALITY COFFEE

Maca Coffee enhances male vitality, stamina, and energy, combining the stimulating effects of coffee with the powerful benefits of maca root.



◀ CORDYCEPS COFFEE SOLID DRINK

It enhance mental alertness and boost overall well-being with a combination of caffeine and Cordyceps extract.



◀ ANTILIPEMIC TEA

The main benefit of this product is that it helps regulate lipid metabolism, reducing cholesterol and triglyceride levels while supporting overall cardiovascular health.



◀ **GYROPHORA TEA**

One key benefit of Fungus of Immortality Tea is its ability to boost immunity and support the proper functioning of vital organs.



◀ **GINGKO HERBAL TEA**

One key benefit of Ginkgo Biloba is its ability to enhance memory and slow brain aging, helping prevent Alzheimer's disease.



◀ **SHUANG TIAO SHUN ZHI ELECTUARY (ISOMALTO)**

Boosts beneficial bacteria, enhances immunity, supports detoxification, and promotes gut and skin health.



◀ **HIGH CALCIUM PROTEIN POWDER**

Helps support heart health, promote cell and tissue growth, and provide balanced nutrition for overall well-being.



◀ **SAW PALMETTO POLYPEPTIDE CAPSULE**

Support for male reproductive health and overall well-being by combining saw palmetto, damiana extract, and polypeptides.



◀ **DANDELION SANJIE HARD CAPSULE**

The main benefit of Dandelion Sanjie Hard Capsule is its natural support for detoxification and promoting liver health.



◀ **NATTO KINASE CAPSULE**

Natto Dilong Capsule supports blood circulation by dissolving clots and reducing blood viscosity.



◀ **SAFFRON AMINO BUTYRIC ACID HARD CAPSULE**

Enhances mental relaxation, improves sleep, and reduces fatigue.



◀ **PROPOLIS SOFTGEL CAPSULE**

One main benefit of propolis is its strong antioxidant properties, which support immune health.



◀ **MULTIVITAMIN TABLETS FOR MIDDLE-AGED ADULTS**

The main benefit of this product is that it supports healthy growth, immune function, and the development of vital organs.



◀ **ALOE SOFT CAPSULES**

Aloe improves skin elasticity, making it soft, smooth, and youthful while promoting digestive health and overall fitness.



◀ **SOYBEAN SOFT GEL CAPSULES**

Provides powerful antioxidant protection, enhances skin elasticity, reduces pigmentation, and helps regulate hormonal balance.



◀ SPIRULINA TABLETS

The main benefit of Eternal Spirulina Tablets is their high bioavailability, with up to 95% of nutrients easily absorbed by the body.



◀ LECITHIN SOFT CAPSULES

One key benefit of lecithin is its ability to emulsify and eliminate excess cholesterol and fats from blood vessels, promoting cardiovascular and cerebrovascular health.



◀ FOLIC ACID CAPSULES

Supports healthy blood, reduces birth defect risks, and promotes overall well-being.



◀ FISH OIL SOFTGEL CAPSULES

Fish oil supports heart and brain health by regulating blood lipids and enhancing brain function with EPA and DHA.



◀ NATURAL VITAMIN E SOFT CAPSULES

Vitamin E supports reproductive health by enhancing sperm formation, boosting vitality, and improving ovarian function.



◀ BROKEN GANODERMA CAPSULES

its ability to strengthen the immune system, enhance vitality, and support overall health by alleviating discomfort and promoting recovery.



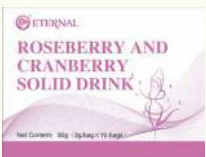
◀ CHITOSAN AND OYSTER TABLET

Chitosan and Oyster tablets boost immunity, enhance male vitality, improve heart and bone health, aid in weight control, and support skin health.



◀ NATURAL LIQUID CALCIUM SOFT CAPSULES

It improves bone strength and boosts calcium levels in the body.



◀ ROSEBERRY AND CRANBERRY SOLID DRINK

Supports urinary tract health and boosts immunity with antioxidants.



◀ MULTI-EFFECT TOOTHPASTE

One key benefit of this product is promoting strong teeth, healthy gums, and long-lasting freshness for overall oral health.



◀ ALOE VERA WHITENING SOAP

This Aloe Vera bath soap cleanses, moisturizes, and rejuvenates the skin, leaving it smooth, refreshed, and balanced while fighting bacteria and environmental pollutants.



Slogan

Eternal International is committed to upholding its core values through the slogan 'Health, Wealth, Peace, and Love'; meaning Good Health, Financial Growth, Strengthening Peace, and Love.

The primary goal is to empower members and the public by providing access to traditional Chinese medicine, enhancing overall well-being, and promoting a fulfilling life.

Our Mission

Our mission is to ensure that good health, financial stability, peace, and love are embraced and spread across the world.

We are dedicated to educating and creating opportunities that improve lives, fostering genuine peace globally.



China - The Land of Traditional Medicine

China has a 5,000-year history of preserving, respecting, and advancing knowledge of health and traditional medicine. Health is a top priority in Chinese culture and traditional medicine, focusing on improving physical well-being, preventing various diseases, and strengthening immunity to slow down aging. The combination of medicinal foods and proper exercises plays a significant role in maintaining overall health.

Eternal International is a globally recognized company specializing in the production and distribution of high-quality health products both locally and internationally. Scientific and technological advancements have significantly transformed the medical industry, leading to a growing demand for traditional medicine due to its holistic approach to health that benefits people of all ages and genders.

Health Product Manufacturing Facility

Our manufacturing facility is located in Shanghai, China, a city renowned for its commitment to environmental conservation and natural landscapes. The factory is built in a well-planned, high-tech environment. Leading academic institutions regularly send experts from various fields to our facility to explore and learn about our health solutions.

We operate in a large commercial market and own an extensive training center that brings together specialists and participants from around the world. Our commitment to excellence ensures that our products meet the highest standards, and we provide top-tier services to our members with professionalism and efficiency.

Eternal International has built a strong reputation globally, successfully spreading the message of health, financial growth, peace, and love. Our long-term goal is to expand our network by establishing over 100 commercial centers worldwide.

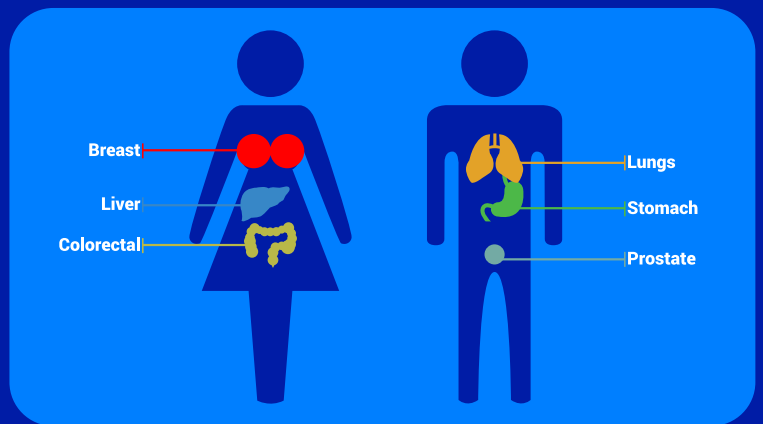
We have strong partnerships with renowned international companies in countries such as the USA, Germany, Canada, Chile, Singapore, and others. Our products undergo rigorous research and development by a team of over 20 health experts, blending traditional Chinese medicine with modern health solutions. This integration has allowed us to develop top-quality products suitable for people of all ages.





Health Product Manufacturing Facility

- Cardiovascular System (Heart & Brain Health)
- Bone Health & Bone-Related Conditions
- Digestive System & Metabolism
- Women's Reproductive Health
- Skin Health & Dermatological Conditions
- Nervous System
- Eye Health & Vision-Related Conditions
- Men's Reproductive Health
- Respiratory System



Other conditions include chronic illnesses such as cancer, obesity, smoking related issues, excessive alcohol consumption, drug use, bad breath/body odor, weakened immune system, and poor growth in children.

We have a dedicated leadership team committed to delivering exceptional services to our members and the wider community.

Our leadership comprises professionals from various nationalities with expertise, competence, and efficiency in different fields.

Eternal Global Presence





Join Eternal Now – Turn Your Dreams Into Reality!

The easiest way to achieve success is by earning additional income. Through our platform, you can effortlessly reach your financial goals and fulfill your dreams.

Commission-Based Earnings Include:

- Commission on personal purchases.
- Commission on purchases made by your team members.
- Additional earnings for reaching leadership levels (Applicable for members who attain Level 5 and above after developing a successful team).
- Leadership bonuses and additional incentives for mentoring and supporting new members in business growth and financial success.

Exclusive Rewards & Incentives:

- International travel opportunities
- Luxury cars
- Cash prizes & financial bonuses
- Luxury homes

Retail Profits:

Members can earn additional profits by selling products to non-members at a retail price.

At Eternal International, we are committed to improving lives through health, financial stability, peace, and love.

Join us today and start your journey towards a healthier, wealthier and more fulfilling life!







ETERNAL BIOTECHNOLOGY CO.,LTD.

Eternal Biotechnology Co., Ltd. offers a dynamic and rewarding business opportunity for individuals worldwide. By sharing the benefits of our high-quality products and the vast potential of our business model and by inspiring others to do the same our distributors are discovering that financial independence is within reach. It all starts with a simple desire to improve one's life.

When you make the commitment to take control of your future, Eternal Biotechnology Co., Ltd. will support you every step of the way, guiding you toward both financial success and personal freedom.

Our proven business model provides not only an opportunity for financial growth but also a comprehensive value-driven experience, supported by our global presence, exceptional product quality, dedicated team, and a long-term vision with solid goals and purpose.

Best of all, our business opportunity is accessible to everyone it requires no significant investment, no financial risk, no specific social background, and no advanced qualifications.

All we ask is that you experience our products and share their benefits with others.



**A SIMPLE WAY TO SUCCESS IS:
START NOW AND YOUR DREAM
WILL COME TRUE.**

**As an ETERNAL distributor,
your earnings come from six
different sources:**





ETERNAL BUSINESS GUIDE

The rank of section

LEVEL 1 DEALER

Register in company

LEVEL 2 DEALER

Qualifications: A person whose total personal PV is 100 PV or more will be promoted to Level 2 Dealer within the same month.

Profit: Monthly personal BV × 6%.

LEVEL 3 DEALER

Qualifications: If an individual's total personal PV is 200 PV or more, they will qualify as a Level 3 Dealer for that month.

Profit: Monthly personal BV × 22%, plus the corresponding indirect bonuses/wages.

LEVEL 4 DEALER

Qualifications:

1. If an individual's total personal PV is greater than or equal to 1,000 PV within a given month, they will qualify as a Level 4 Dealer for that month.
2. If there are three separate networks, each containing a Level 3 Dealer, and the combined performance of these networks is greater than or equal to 1,000 PV, the individual will qualify as a Level 4 Dealer for that month.
3. If there are two separate networks, each containing a Level 3 Dealer, and the total performance of the entire area is greater

than or equal to 2,200 PV, the individual will qualify as a Level 4 Dealer for that month.

Profit Calculation: The monthly personal BV is multiplied by 26%, plus the corresponding indirect wages.

To qualify for indirect wages, the distributor's individual performance must be greater than or equal to 10 PV.

LEVEL 5 DEALER

Qualifications:

1. If there are three separate networks, each containing a Level 4 Dealer, and the total performance of the entire area is greater than or equal to 3,800 PV, the individual will qualify as a Level 5 Dealer for that month.
2. If there are two separate networks, each containing a Level 4 Dealer, and the total performance of the entire area is greater than or equal to 7,800 PV, the individual will qualify as a Level 5 Dealer for that month.
3. If there are two separate networks, each containing a Level 4 Dealer, along with four separate networks, each containing a Level 3 Dealer, and the total performance of the entire area is greater than or equal to 3,800 PV, the individual will qualify as a Level 5 Dealer for that month.
4. If there is one network containing a Level 4 Dealer, along with six separate networks, each containing a Level 3 Dealer,

and the total performance of the entire area is greater than or equal to 3,800 PV, the individual will qualify as a Level 5 Dealer for that month.

Profit Calculation:

The monthly personal BV is multiplied by 30%, plus the corresponding indirect wages and leadership wages.

To qualify for direct and indirect wages, the distributor's individual performance must be greater than or equal to 20 PV.

For promotion under methods 1 to 4, the monthly Total new sales volume within the team, excluding the performance of members at the same or higher rank, must be greater than or equal to 500 PV, allowing the distributor to receive a 0.2% leadership bonus for the same rank.

LEVEL 6 DEALER

Qualifications:

1. If there are three separate networks, each with a Level 5 Dealer, and the combined performance of the entire area is greater than or equal to 16,000 PV, the individual will qualify as a Level 6 Dealer for that month.
2. If there are two separate networks, each with a Level 5 Dealer, and the combined performance of the entire area is greater than or equal to 35,000 PV, the individual will qualify as a Level 6 Dealer for that month.
3. If there are two separate networks, each with a Level 5 Dealer, and four separate networks, each with one Level 4 Dealer, and the combined performance of the entire area is greater than or equal to 16,000 PV, the individual will qualify as a Level 6 Dealer for that month.
4. If there is one network with a Level 5 Dealer, and six networks with Level 4 Dealers, and the combined performance of the entire area is greater than or equal to 16,000 PV, the individual will qualify as a Level 6 Dealer for that month.

Profit Calculation:

The monthly personal BV is multiplied by 34%, plus the corresponding indirect wages and leadership wages.

To qualify for direct and indirect wages, the distributor's individual performance must be greater than or equal to 40 PV.

When promoting through the methods outlined in points 1 to 4, the monthly group performance must be greater than or equal to 800 PV, and there must be N eligible departments under the network in order to qualify for the same rank of 0.3% leadership bonus.

LEVEL 7 DEALER

Qualifications:

1. If there are three networks, each containing a Level 6 Dealer, and the total performance of the entire area is greater than or equal to 73,000 PV, the individual will qualify as a Level 7 Dealer for the next month.
2. If there are two networks, each containing a Level 6 Dealer, and the total performance of the entire area is greater than or equal to 145,000 PV, the individual will qualify as a Level 7 Dealer for the next month.
3. If there are two networks, each containing a Level 6 Dealer, and four networks containing Level 5 Dealers, and the total performance of the entire area is greater than or equal to 73,000 PV, the individual will qualify as a Level 7 Dealer for the next month.
4. If there is one network containing a Level 6 Dealer, and six networks containing Level 5 Dealers, and the total performance of the entire area is greater than or equal to 73,000 PV, the individual will qualify as a Level 7 Dealer for the next month.

Profit Calculation:

The monthly personal BV is multiplied by 40%, along with the corresponding indirect wages and leadership wages.

To qualify for direct and indirect wages, the distributor's individual performance must be greater than or equal to 80 PV.

When promoting using methods 1 through 4, the monthly total new sales volume within the team, excluding the performance of members at the same or higher rank must be greater than or equal to 2000 PV, and there must be eligible departments under the network. Those who qualify will receive the same rank's 0.4% leadership bonus.

LEVEL 8 DEALER

Qualifications:

1. If there are three networks, each containing a Level 7 Dealer, and the total

performance of the entire area is greater than or equal to 280,000 PV, the individual will qualify as a Level 8 Dealer for the next month.

2. If there are two networks, each containing a Level 7 Dealer, and the total performance of the entire area is greater than or equal to 580,000 PV, the individual will qualify as a Level 8 Dealer for the next month.

3. If there are two networks, each containing a Level 7 Dealer, and four Level 6 Dealers in the respective networks, and the total performance of the entire area is greater than or equal to 280,000 PV, the individual will qualify as a Level 8 Dealer for the next month.

4. If there is one network containing a Level 7 Dealer, and six networks each containing Level 6 Dealers, and the total performance of the entire area is greater than or equal to 280,000 PV, the individual will qualify as a Level 8 Dealer for the next month.

Profit Calculation:

The monthly personal BV is multiplied by 43%, plus the corresponding indirect wages and leadership wages.

To qualify for direct and indirect wages, the distributor's individual performance must be greater than or equal to 180 PV.

When promoting using methods 1 through 4, the monthly total new sales volume within the team, excluding the performance of members at the same or higher rank must be greater than or equal to 3000 PV, and there must be eligible departments under the network. Those who qualify will receive the same rank's 0.5% leadership bonus.

LEVEL 9 DEALER

Qualifications:

1. If there are three networks, each with a Level 8 Dealer, and the combined performance of the entire area is greater than or equal to 400,000 PV, the individual will qualify as a Level 9 Dealer for the next month.

2. If there are two networks, each with a Level 8 Dealer, and the combined performance of the entire area is greater than or equal to 780,000 PV, the individual will qualify as a Level 9 Dealer for the next month.

3. If there are two networks, each with a Level 8 Dealer, and four networks with Level 7 Dealers, and the combined performance of the entire area is greater than or equal to 400,000 PV, the individual will qualify as a Level 9 Dealer for the next month.

4. If there is one network with a Level 8 Dealer and six networks with Level 7 Dealers, and the combined performance of the entire area is greater than or equal to 400,000 PV, the individual will qualify as a Level 9 Dealer for the next month.

Profit Calculation:

The monthly personal BV is multiplied by 45%, plus the corresponding indirect wages and leadership wages.

To qualify for direct and indirect wages, the distributor's individual performance must be greater than or equal to 180 PV.

For the methods mentioned in points 1 through 4, when promoting, the monthly group performance must be greater than or equal to 3,000 PV. Additionally, there must be eligible departments under the network, and these departments will receive a 0.6% leadership bonus for the same rank.



ETERNAL BUSINESS GUIDE

Encouragement Award section

After reaching Level 9 Dealer, you can qualify for the following distributor rank:

RUBY DISTRIBUTOR

Qualifications:

An individual must have at least three separate networks, each containing a Level 9 Dealer.

Once this requirement is met, the distributor will be promoted to Ruby Distributor for that month.

Obligations:

The distributor must achieve a personal performance of at least 280 PV.

The total group performance must be greater than or equal to 3,000 PV.

There must be N eligible departments under the network, allowing the distributor to receive the same rank leadership bonus for up to eight generations.

Profit:

Eligible to participate in the "Encouragement Bonus" from the Ruby Bonus Pool, up to a maximum of 2.5%.

SAPPHIRE DISTRIBUTOR

Qualifications:

An individual will qualify as a Sapphire Distributor if they have at least three separate networks, each containing a Level 9 Dealer, within a given month.

Obligations:

The distributor's individual performance must be greater than or equal to 280 PV per month.

The total group performance must be greater than or equal to 1,800 PV per month.

Profit:

Eligible to participate in the "1% Encouragement Bonus" from the Sapphire Bonus.



LEVEL 1

DIAMOND DEALER

Qualifications: _____

An individual qualifies as a Diamond Dealer if they have at least four networks, each containing a Level 9 Dealer.

Upon achieving this qualification, they will be recognized as a Sapphire Distributor for that month.

Obligations: _____

The distributor's individual performance must be greater than or equal to 280 PV.

The total performance, including contributions from each Level 9 line, must be greater than or equal to 28,000 PV.

Profit: _____

Eligible to participate in the 1.5% Encouragement Bonus from the Level 1 Diamond Bonus.



LEVEL 2

DIAMOND DEALER

Qualifications: _____

If an individual has at least five separate networks, each containing a Level 9 Dealer, they will qualify as a Level 2 Diamond Dealer for that month.

Obligations: _____

The distributor's individual performance must be greater than or equal to 280 PV.

The total performance contributed by each Level 9 line must be greater than or equal to 28,000 PV.

Profit: _____

Eligible to participate in the "1% Encouragement Bonus" from the Level 2 Diamond Bonus.



LEVEL 3

DIAMOND DEALER

Qualifications: _____

An individual will qualify as a Level 3 Diamond Dealer for the month if they have at least six separate networks, each containing a Level 9 Dealer.

Obligations: _____

The distributor's individual performance must be greater than or equal to 280 PV.

The total performance contributed by each Level 9 line must be greater than or equal to 28,000 PV.

Profit: _____

Eligible to participate in the "1% Encouragement Bonus" from the Level 3 Diamond Bonus.



LEVEL 4

DIAMOND DEALER

Qualifications: _____

If an individual has at least seven separate networks, each containing a Level 9 Dealer, they will qualify as a Level 4 Diamond Dealer for that month.

Obligations: _____

The individual performance of the distributor must be greater than or equal to 280 PV.

The total performance, including all contributions from every Level 9 line, must be greater than or equal to 28,000 PV.

Profit: _____

Qualifies to participate in the "1% Encouragement Bonus" from the Level 4 Diamond Bonus.



LEVEL 5

DIAMOND DEALER

Qualifications: _____

To qualify as a Diamond Dealer, the individual must have at least nine separate networks, each containing a Level 9 Dealer.

Obligations: _____

The distributor's individual performance must be greater than or equal to 280 PV.

The total performance, which is the sum of performance from each Level 9 line, must be greater than or equal to 28,000 PV.

Profit: _____

The individual will be eligible to participate in the 1% Encouragement Bonus from the Level 5 Diamond Bonus.



SHAREHOLDER DEALER

Qualifications: _____

To qualify as a Level 5 Shareholder Dealer for the month, the distributor must have at least four separate networks, each containing a Diamond Dealer.

Obligations: _____

The distributor's individual performance must be greater than or equal to 280 PV.

The total performance of all diamond lines, when combined, must be greater than or equal to 100,000 PV.

Profit: _____

The distributor will participate in the 1% Encouragement Bonus from the Shareholder Dealer Bonus.

Note 1: _____

Indirect wages are included.

Level	Level 1	Level 2	Level 3
Indirect wages	0	0	0-22%
Level	Level 4	Level 5	Level 6
Indirect wages	0-26%	0-30%	0-34%
Level	Level 7	Level 8	Level 9
Indirect wages	0-40%	0-43%	0-45%

Note 2: _____

Leadership wages the entire performance of the same rank corresponding leadership wages percentage.

Level	Level 5	Level 6	Level 7	Level 8	Level 9
Personal PV	20PV	40PV	80PV1	80PV	180PV
Group PV	500PV	800PV	2000PV	3000PV	3000PV
Leadership wages	0.2%	0.3%	0.4%	0.5%	0.6%



**YOU CAN, YOU WILL
YOU MUST.**

Every great dream begins with a single, unwavering belief in yourself. Even when you're unsure of the path ahead, trust that each step, no matter how small, is taking you closer to the vision you hold within. When you feel like giving up, remind yourself of why you started, of the passion that sparked your journey. You've come too far to turn back now.





Eternal International Transforming Lives, Creating Opportunities

Founded by **Mr. Zhao Hui Gong**, Eternal International is a visionary company dedicated to empowering individuals through natural health, financial growth, and global unity.

With a strong presence across Africa and beyond, we have helped millions achieve better health, sustainable wealth, and a brighter future.

Our mission is built on integrity, innovation, and a commitment to changing lives.

HEALTH, WEALTH, PEACE, AND LOVE
More than words, it's our way of life.



HEALTH

The Greatest Wealth

Good health is the key to a happy and fulfilling life. At Eternal International, we promote natural healing and wellness because a healthy life is a successful life.

WEALTH

Empowering Financial Freedom

We believe in shared success. Through our unique business model, we create sustainable income opportunities, helping individuals achieve financial independence and prosperity.



PEACE

Building a Better Tomorrow

True success comes with inner peace and harmony. By fostering trust and unity, we create a global family where everyone thrives together.

LOVE

The Heart of Our Mission

Love drives everything we do. From health to wealth and peace, we are committed to uplifting lives and transforming communities.



HEALTH
WEALTH
PEACE
LOVE

Join WITH US TODAY!



- HEALTH
- WEALTH
- PEACE
- LOVE

Join WITH US TODAY!

WELCOME



#eternalinternational.wealth

SCAN HERE

PLEASE SCAN HERE WITH YOUR MOBILE PHONE AND DON'T FORGET TO FOLLOW US. THANK YOU VERY MUCH!



#eternalinternationalHQ

SCAN HERE

PLEASE SCAN HERE WITH YOUR MOBILE PHONE AND DON'T FORGET TO FOLLOW US. THANK YOU VERY MUCH!



#eternalinternational.health

SCAN HERE

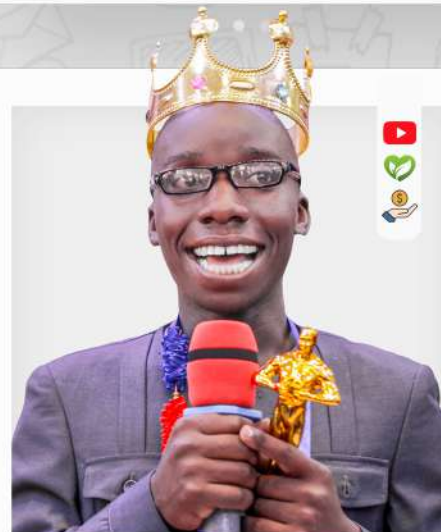
PLEASE SCAN HERE WITH YOUR MOBILE PHONE AND DON'T FORGET TO FOLLOW US. THANK YOU VERY MUCH!



#eternalinternationalhq

SCAN HERE

PLEASE SCAN HERE WITH YOUR MOBILE PHONE AND DON'T FORGET TO FOLLOW US. THANK YOU VERY MUCH!



#eternalinternationalHQ

SCAN HERE

PLEASE SCAN HERE WITH YOUR MOBILE PHONE AND DON'T FORGET TO FOLLOW US. THANK YOU VERY MUCH!







ETERNAL



ETERNAL EAST AFRICA
(KENYA EDITION)